

SEOUL - NAMI ISLAND 6D4N

BOSSBABETRAVEL.MY | TRAVEL LIKE A BOSS



DAY 01

- Arrived Incheon airport
- Visit Korean Folk Village, Yongin
- Lunch
- Going back to Seoul
- Dinner at Myeongdong
- Check in hotel

DAY 02

- Day 2
- Nami Island with Ferry Ride
- Gangchon bike rail
- Lunch
- Namsan Seoul Tower
- Dinner

DAY 03

- Starfield library
- Itaewon Mosque
- Lunch
- Cheonggyecheon Stream
- Insadong*
- Myeongdong Street
- Dinner

DAY 04

- Gyeongbok Palace + Hanbok Experience & National Folk Museum*
- Seaweed Museum + Kimchi Making or Namdaemun Market
- Lunch
- Hongdae shopping street (fashion & beauty)
- Dinner - optional
- Namsan Tower

DAY 05

- Check out hotel
- Free and easy
- Transfer to Airport

PRICE DETAILS SEOUL - NAMI 6D4N

RM 3,690/pax
RM 3,490/pax : 2-10 y.o
RM 900 - 2 y.o below

PACKAGE INCLUDES

- Flight KUL - ICN - KUL (limited to RM1,400/pax price) with 20kg luggage
- Public transport
- 4 nights hotel at Seoul (private bathroom)
- Tour Guide
- Insurance
- Entrance fee Nami Islands
- Airport transfer

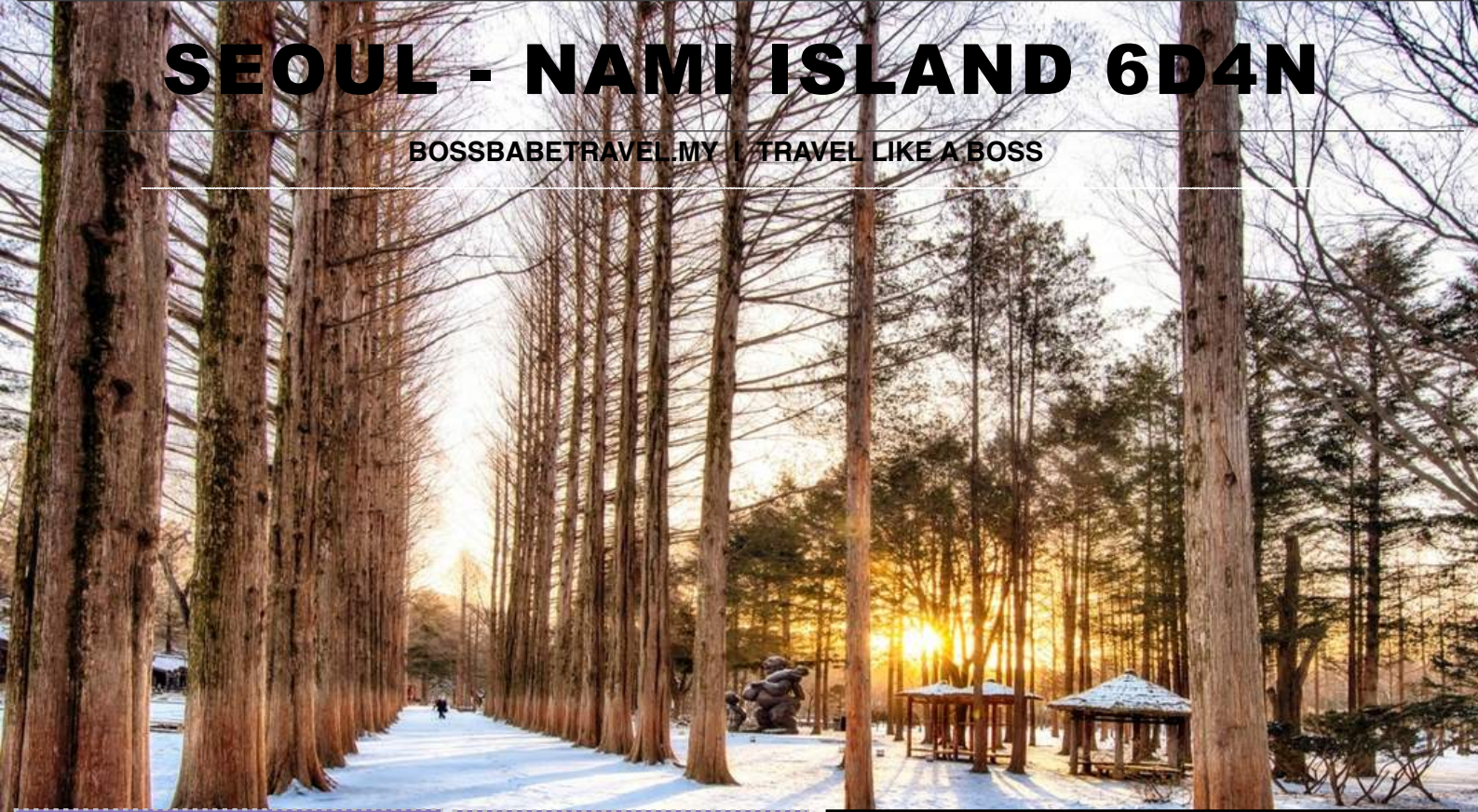
BOSSBABE
TRAVEL & TOURS

PACKAGE EXCLUDES

- meal (RM35-50/meal**)
- extra luggage
- ski park/everland
- K-ETA application (RM85/pax) 1

SEOUL - NAMI ISLAND 6D4N

BOSSBABETRAVEL.MY | TRAVEL LIKE A BOSS



DAY 01

- Arrived Incheon airport
- Visit Korean Folk Village, Yongin
- Lunch
- Going back to Seoul
- Dinner at Myeongdong
- Check in hotel

DAY 02

- Day 2
- Nami Island with Ferry Ride
- Gangchon bike rail
- Lunch
- Namsan Seoul Tower
- Dinner

PRICE DETAILS SEOUL - NAMI 6D4N

RM 4,690/pax
 RM 4,490/pax : 2-10 y.o
 RM 1,000 - 2 y.o below

DAY 03

- Starfield library
- Itaewon Mosque
- Lunch
- Cheonggyecheon Stream
- Insadong*
- Namdaemun Market
- Myeongdong Street
- Dinner

DAY 04

- Gyeongbok Palace + Hanbok Experience & National Folk Museum*
- Seaweed Museum + Kimchi Making or Namdaemun Market
- Lunch
- Hongdae shopping street (fashion & beauty)
- Dinner - optional Namsan Tower

PACKAGE INCLUDES

- Flight KUL - ICN - KUL (limited to RM1,400/pax price) with 20kg luggage
- Private transport
- 4 nights hotel at Seoul (private bathroom)
- Tour Guide
- Insurance
- Entrance fee Nami Islands
- Airport transfer

BOSSBABE
 TRAVEL & TOURS

DAY 05

- Check out hotel
- Free and easy
- Transfer to Airport

PACKAGE EXCLUDES

- meal (RM35-50/meal**)
- extra luggage
- ski park/everland
- K-ETA application (RM85/pax) 2

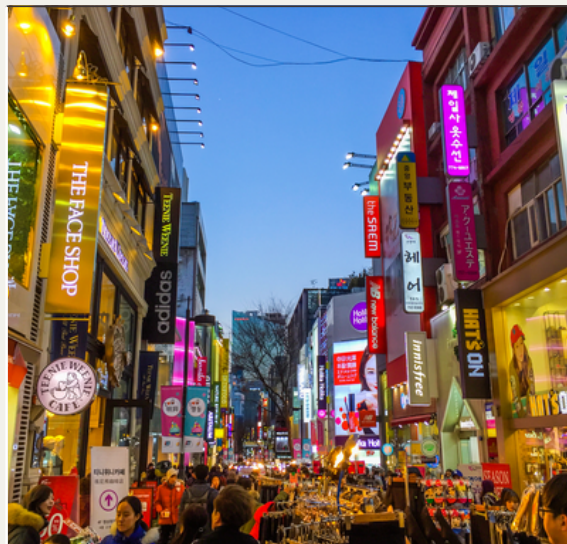
SEOUL - JEJU, KOREA ITINERARY DAY 1



YONGIN FOLK VILLAGE



**SEOUL CENTRAL
MOSQUE**



**MYEONGDONG
STREET**

SEOUL - JEJU, KOREA ITINERARY DAY 2



NAMI ISLAND DAY TRIP

SEOUL - JEJU, KOREA ITINERARY DAY 3



ITAEWON MOSQUE



**STARFIELD
LIBRARY**



**NAMDAEMUN
MARKET**



**GWANGHWAMUN,
CHEONGGYECHON STREAM**



**GANGNAM STYLE
STATUE**



SEOUL - JEJU, KOREA ITINERARY DAY 4



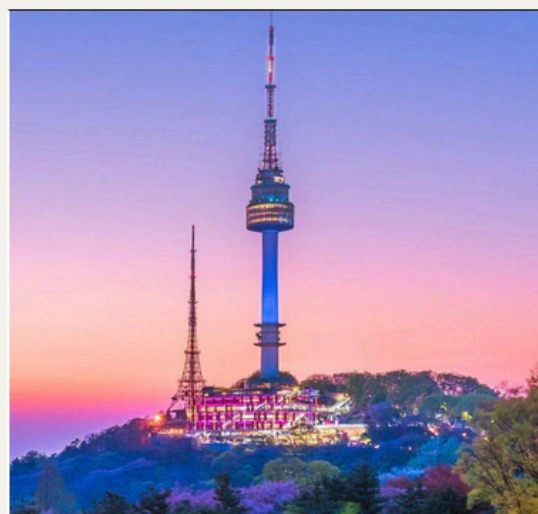
**GYEONGBOKGUNG
PALACE**



**GYEONGBOKGUNG
HANBOK RENTAL**



HONGDAE MARKET



NAMSAN TOWER