

KUNMING - DALI - LIJIANG - SHANGRI LA CHINA 7D6N

BOSSBABETRAVEL.MY | TRAVEL LIKE A BOSS



DAY 01

Meet & Greet with our tour guide at Kunming International Airport ,

- ✓ Transfer to hotel
- Check in hotel and rest

DAY 02

After breakfast, check out then proceed to :

- ✓ Dali Nanmen Mosque
- ✓ Dali Old Town
- ✓ Cangshan Mountains or Erhai Lake
- Transfer to hotel, check in & rest

DAY 03

After breakfast, check out then proceed to :

- ✓ UNESCO World Heritage Site of Lijiang
- ✓ Black Dragon Pool
- ✓ Lijiang Old Town
- Transfer to hotel, check in & rest

DAY 04

After breakfast, proceed to :

- ✓ Jade Dragon Snow Mountain
- ✓ Cable car ride (include)
- ✓ Live performance of 'Impression Lijiang'
- ✓ Blue Moon Valley
- ✓ Lijiang Mosque

Transfer to hotel & rest

PRICE DETAILS

YUNNAN PLATINUM, CHINA 7D6N

4-9 pax : RM 4,950/pax
10 pax : RM 4,650/pax
15 pax : RM 4,450/pax
20 pax : RM 4,150/pax

KUNMING - DALI - LIJIANG, CHINA 7D6N

BOSSBABETRAVEL.MY | TRAVEL LIKE A BOSS



DAY 05

After breakfast, check out then proceed to :

- ✓ Shangri - La
- ✓ Tiger Leaping Gorge
- Transfer to hotel, check in & rest
- Jalan santai Old Town Dukezong

DAY 06

After breakfast, proceed to :

- ✓ Songzanlin Monastery
- ✓ Napa Lake - horse riding ~ Tibet cultural
- ✓ Dukezong Old Town with sunset
- ✓ Transfer to hotel & rest

DAY 07

After breakfast, check out then proceed to :

- Transfer to airport Shangri La to Kunming or with high speed train to Kunming (4-4 hours)
- Transfer to airport Kunming

PACKAGE INCLUDES

1. Airport transfer return
2. 4star muslim friendly hotel with 6x daily breakfast
3. HALAL meals as mentioned in the itinerary (6x lunch, 6x dinner)
4. One mineral water per day per person
5. Private transportation during tour
6. Round-trip cable-way
7. Entrance fees of sightseeing as mentioned in the itinerary
8. English/Malay speaking guide
9. Tipping to guide & driver

PACKAGE EXCLUDES

- . Flights ticket international or domestic (Lijiang / Dali / Shangri La) (purchasing service available) (~RM650)
- . Personal expenses
- . Travel insurance (recommended)
- . Surcharge public holiday and peak season
- . Extra days, extra routes
- . Airport handling fee
- . Train Lijiang - Kunming 4 hours ticket (~RM250)
- . Anything not mentioned above

2

KUNMING-DALI-LIJIANG ITINERARY DAY 1



KUNMING CITY NIGHT VIEW

- MEET AND GREET WITH TOUR GUIDE AT THE AIRPORT
- HOTEL CHECK IN

WWW.BOSSBABETRAVEL.MY

KUNMING-DALI-LIJIANG ITINERARY DAY 2



DALI NANMEN MOSQUE



DALI OLD TOWN



CANGSAN MOUNTAIN

WWW.BOSSBABETRAVEL.MY

KUNMING-DALI-LIJIANG ITINERARY DAY 3



**UNESCO WORLD
HERITAGE SITE OF LIJIANG**



BLACK DRAGON POOL



LIJIANG OLD TOWN

WWW.BOSSBABETRAVEL.MY

KUNMING-DALI-LIJIANG ITINERARY DAY 4



**JADE DRAGON
SNOW MOUNTAIN**



CABLE CAR RIDE



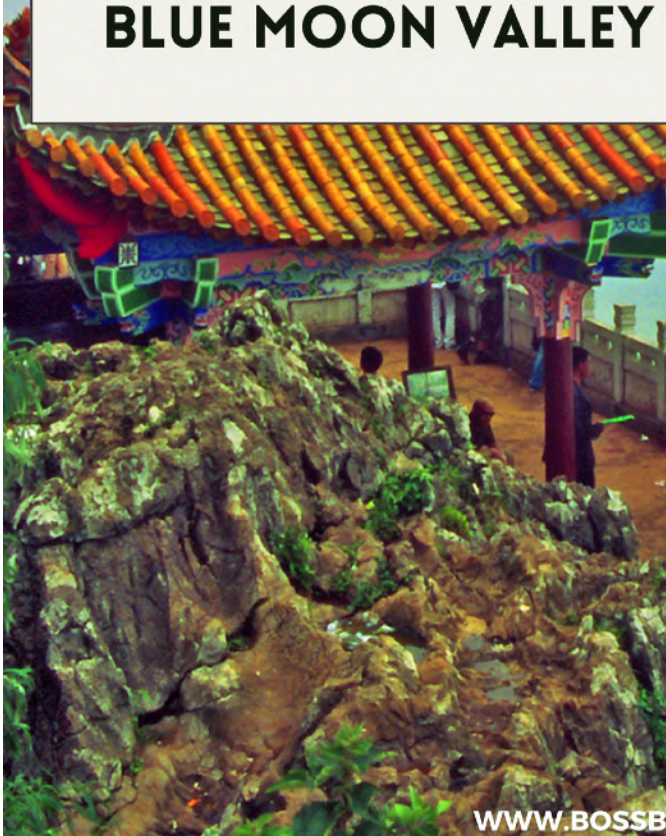
**LIVE PERFORMANCE
'IMPRESSION LIJIANG'**

WWW.BOSSBABETRAVEL.MY

KUNMING-DALI-LIJIANG ITINERARY DAY 4



BLUE MOON VALLEY



LIJIANG MOSQUE

WWW.BOSSBABETRAVEL.MY

KUNMING-DALI-LIJIANG ITINERARY DAY 5 & 6



TIGER GORGE LEAPING



NAPA LAKE



DUKEZONG ANCIENT CITY

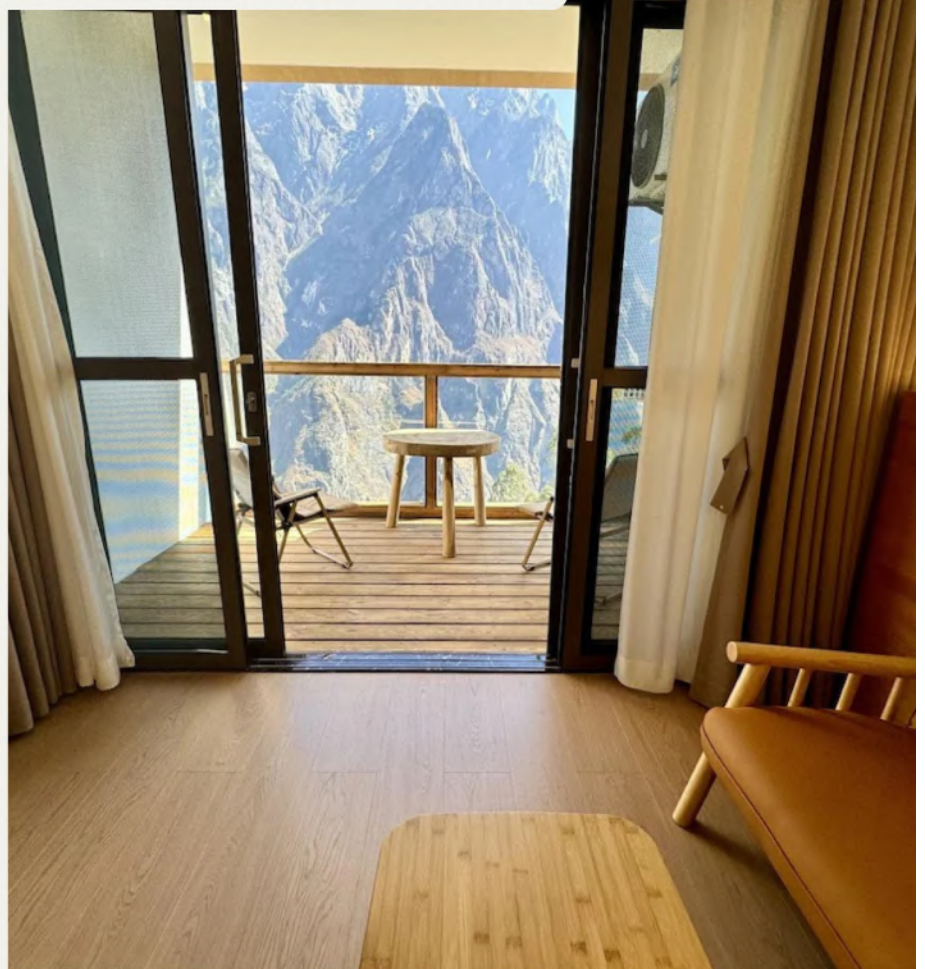


SHONGZANLIN

WWW.BOSSBABETRAVEL.MY



SHANGRI LA HOTEL | www.bossbabetravel.my



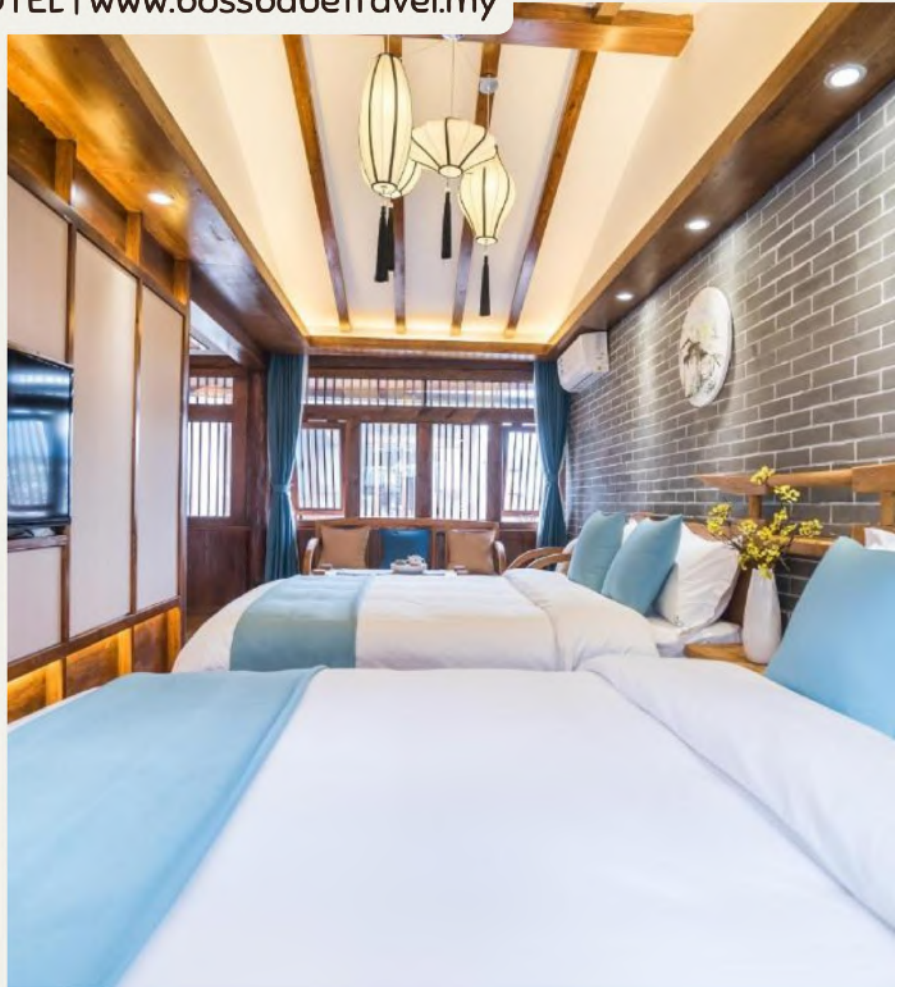
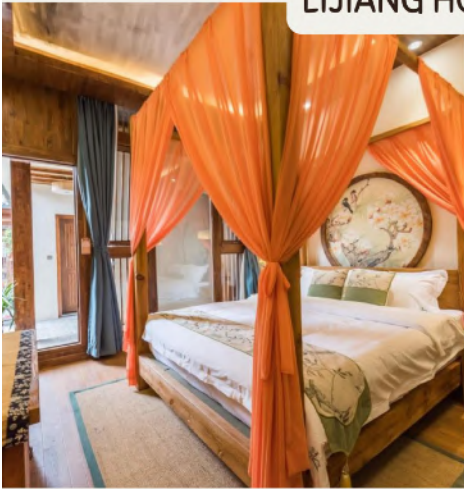


DALI HOTEL | www.bossbabetravel.my





LIJIANG HOTEL | www.bossbabetravel.my





WAN JIN AN HOTEL | www.bossbabetravel.my

