

HONG KONG 4D3N

BOSSBABETRAVEL.MY | TRAVEL LIKE A BOSS



DAY 01

- Airport transfer to hotel
- Victoria peak
- Iconic Peak Tram, explore the Peak Tower and Peak Galleria for shopping and dining, and hike on scenic trails ; Peak Circle Walk.
- Back to hotel

DAY 04

- Avenue of stars photo stop
- Bruce Lee statue
- Free and easy
- Send to airport

DAY 02 (THEME PARK)

- 1 Day spend at Disneyland theme park

DAY 03

SHOPPING DAY TRIP

- Kowloon Shopping street
- Harbour city
- Stanley market
- Ladies market



Or can choose **sightseeing program**

- Ocean terminal deck
- Victoria harbour sailing
- Victoria Docksite
- Gallery / museum visit

PRICE DETAILS

HONG KONG 4D3N

- Min 06 pax : RM 2,850/pax
- 7pax above : RM2,550/pax

PACKAGE INCLUDES

- Accommodation local 4 star hotel
- Breakfast 3 days
- Lunch 4 days
- Airport transfer
- Disneyland ticket 1 day
- The peak tram roundtrip
- Skydeck 428 entrance ticket
- Public transport (train or bus)
- Tour guide malay speaking

PACKAGE EXCLUDES

- ⊖ Flight tickets (purchasing service available)
- ⊖ Other places :
 - Ocean park HK RM225
 - Ngong Ping cable car RM115
 - HK observation wheel RM30
- ⊖ Personal expenses
- ⊖ Travel insurance (RM25-recommended)
- ⊖ Bossbabe transporter KLIA and airport handling fee
- ⊖ Dinner
- ⊖ Additional or route change

HONGKONG, ITINERARY DAY 1



VICTORIA PEAK



VICTORIA PEAK

HONGKONG, ITINERARY DAY 2



**HONG KONG
DISNEYLAND**



**HONG KONG
DISNEYLAND**

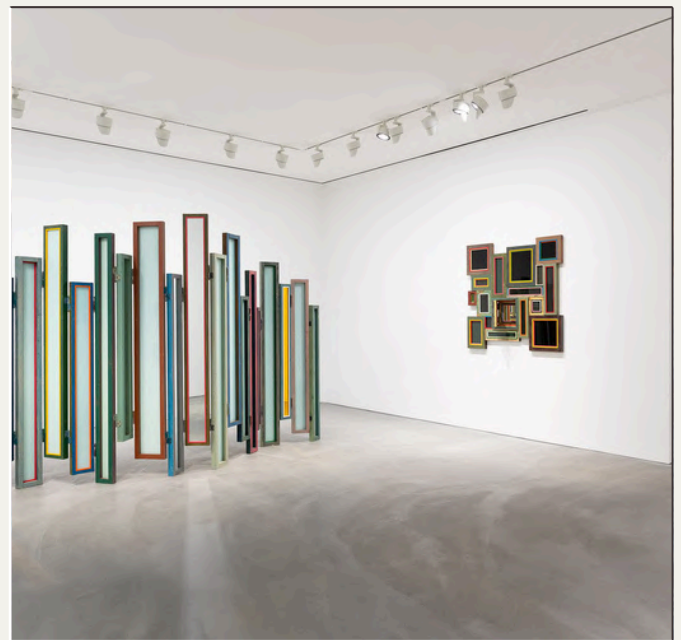
HONGKONG, ITINERARY DAY 2 or 3



**OCEAN TERMINAL
DECK**



**VICTORIA HARBOUR
SAILING**



**GALLERY /
MUSEUM**

HONGKONG, ITINERARY DAY 3



**KOWLOON
SHOPPING STREET**



**HARBOUR CITY
HONGKONG**



STANLEY MARKET



LADIES MARKET

HONGKONG, ITINERARY DAY 4



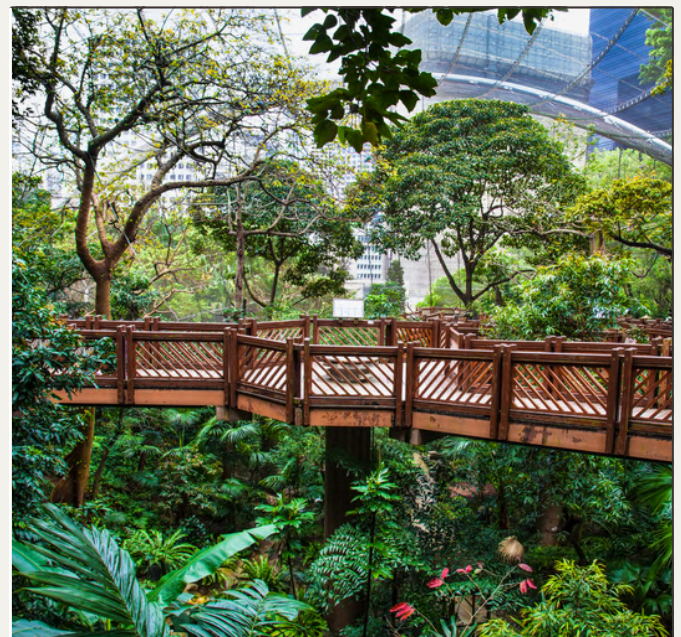
**FREE & EASY
ACTIVITY**



BRUCE LEE STATUE



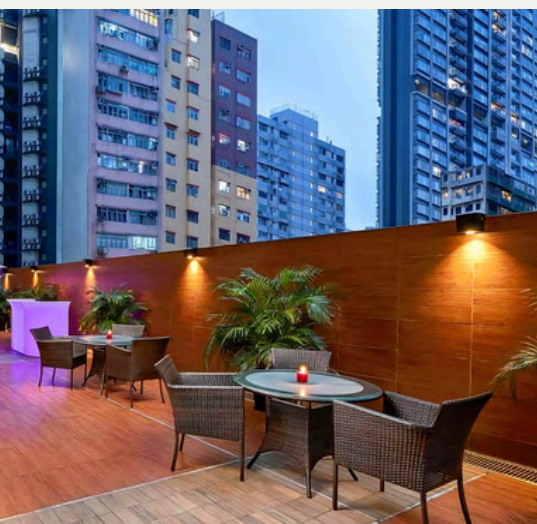
AVENUE OF STARS



**FREE & EASY
ACTIVITY**



HOTEL RAMADA | www.bossbabetravel.my





HOTEL GLOUCESTER | www.bossbabetravel.my

