

KUNMING - DALI - LIJIANG, CHINA 7D6N

BOSSBABETRAVEL.MY | TRAVEL LIKE A BOSS



DAY 01

Meet & Greet with our tour guide at Kunming International Airport ,

- ✓ Transfer to hotel
- Check in hotel and rest

DAY 02

After breakfast, check out then proceed to :

- ✓ Dali Nanmen Mosque
- ✓ Dali Old Town
- ✓ Cangshan Mountains or Erhai Lake
- Transfer to hotel, check in & rest

DAY 03

After breakfast, check out then proceed to :

- ✓ UNESCO World Heritage Site of Lijiang
- ✓ Black Dragon Pool
- ✓ Lijiang Old Town
- Transfer to hotel, check in & rest

DAY 04

After breakfast, proceed to :

- ✓ Jade Dragon Snow Mountain
- ✓ Cable car ride (include)
- ✓ Live performance of 'Impression Lijiang'
- ✓ Blue Moon Valley
- ✓ Lijiang Mosque

Transfer to hotel & rest

PRICE DETAILS

YUNNAN, CHINA 7D6N

4-9 pax : RM 4,550/pax
10 pax : RM 4,150/pax
15 pax : RM 3,950/pax
20 pax : RM 3,650/pax

KUNMING - DALI - LIJIANG, CHINA 7D6N

BOSSBABETRAVEL.MY | TRAVEL LIKE A BOSS



DAY 05

After breakfast, check out then proceed to :

- ✓ Muslim village
- ✓ Hui Muslim family
- Transfer to hotel, check in & rest

DAY 06

After breakfast, proceed to :

- ✓ Stone Forest
- ✓ Small Stone Forest
- ✓ Astaxanthin Farm
- ✓ Shuncheng Mosque
- Transfer to hotel & rest

DAY 07

After breakfast, check out then proceed to :

- ✓ Burning Cream Center
- ✓ Dounan Flower Market
- ✓ Luosiwan wholesale market
- Transfer to airport

PACKAGE INCLUDES

1. Airport transfer return
2. 4star muslim friendly hotel with 6x daily breakfast
3. HALAL meals as mentioned in the itinerary (6x lunch, 6x dinner)
4. One mineral water per day per person
5. Private transportation during tour
6. Round-trip cable-way
7. Entrance fees of sightseeing as mentioned in the itinerary
8. English speaking guide
9. Tipping to guide & driver

PACKAGE EXCLUDES

- . Flights ticket international or domestic (Lijiang / Dali) (purchasing service available)
- . Personal expenses
- . Travel insurance (recommended)
- . Surcharge public holiday and peak season
- . Extra days, extra routes
- . Airport handling fee
- . Train Lijiang - Kunming 4 hours ticket
- . Anything not mentioned above

KUNMING-DALI-LIJIANG ITINERARY DAY 1



KUNMING CITY NIGHT VIEW

- MEET AND GREET WITH TOUR GUIDE AT THE AIRPORT
- HOTEL CHECK IN

WWW.BOSSBABETRAVEL.MY

KUNMING-DALI-LIJIANG ITINERARY DAY 2



DALI NANMEN MOSQUE



DALI OLD TOWN



CANGSAN MOUNTAIN

WWW.BOSSBABETRAVEL.MY

KUNMING-DALI-LIJIANG ITINERARY DAY 3



**UNESCO WORLD
HERITAGE SITE OF LIJIANG**



BLACK DRAGON POOL



LIJIANG OLD TOWN

WWW.BOSSBABETRAVEL.MY

KUNMING-DALI-LIJIANG ITINERARY DAY 4



**JADE DRAGON
SNOW MOUNTAIN**



CABLE CAR RIDE



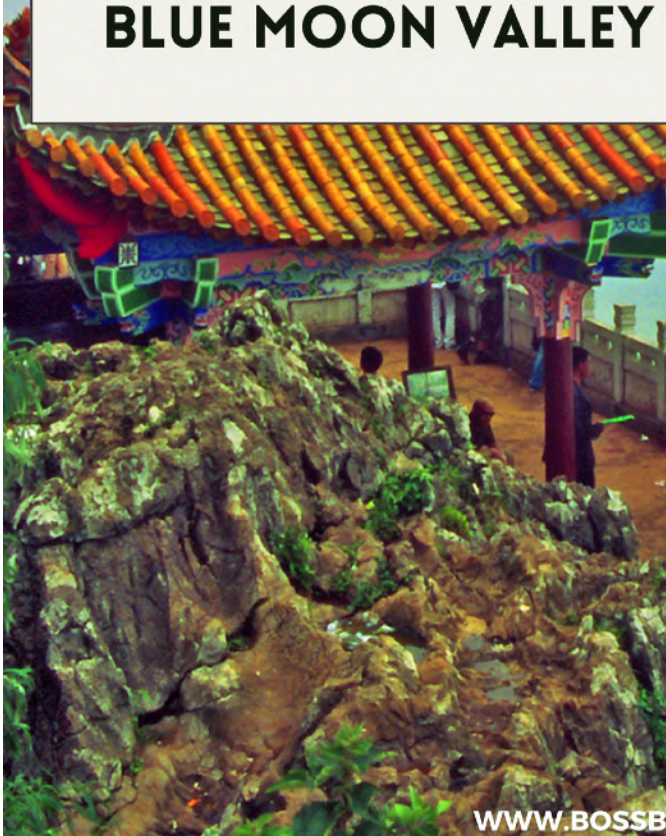
**LIVE PERFORMANCE
'IMPRESSION LIJIANG'**

WWW.BOSSBABETRAVEL.MY

KUNMING-DALI-LIJIANG ITINERARY DAY 4



BLUE MOON VALLEY



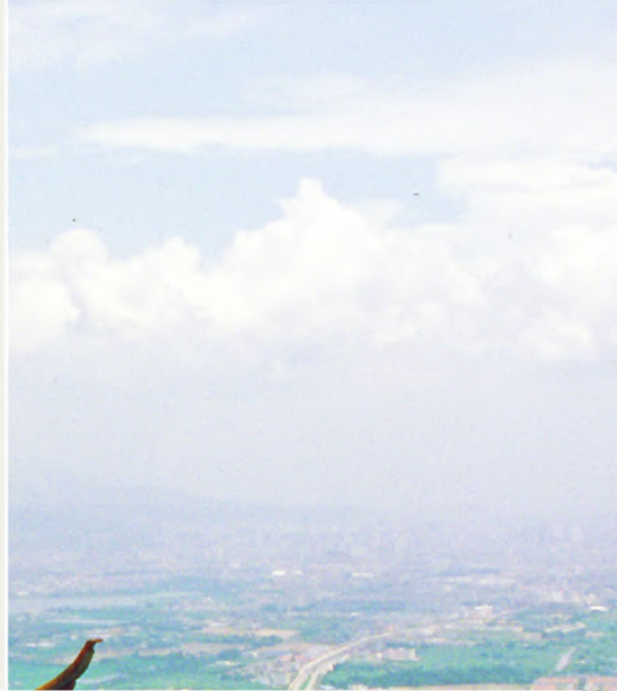
LIJIANG MOSQUE

WWW.BOSSBABETRAVEL.MY

KUNMING-DALI-LIJIANG ITINERARY DAY 5



HUI MUSLIM VILLAGE



HUI MUSLIM FAMILY

WWW.BOSSBETRAVEL.MY

KUNMING-DALI-LIJIANG ITINERARY DAY 6



STONE FOREST



SMALL STONE FOREST



SHUNCHENG MOSQUE



ASTAXANTHIN FARM

WWW.BOSSBABETRAVEL.MY

KUNMING-DALI-LIJIANG ITINERARY DAY 7



BURNING CREAM CENTER



DOUNAN FLOWER MARKET

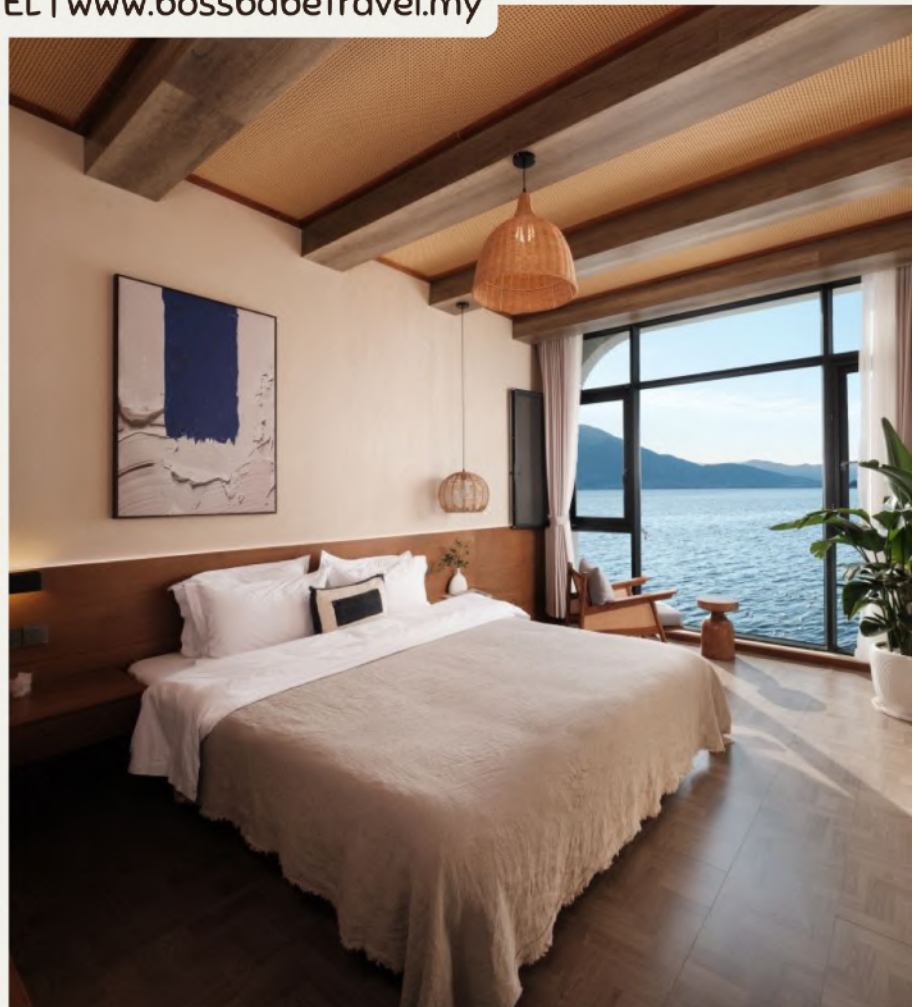


**LUOSIWAN
WHOLESALE MARKET**

WWW.BOSSBABETRAVEL.MY

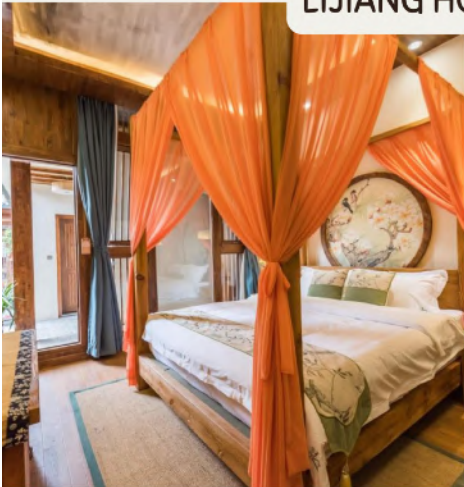


DALI HOTEL | www.bossbabetravel.my





LIJIANG HOTEL | www.bossbabetravel.my





WAN JIN AN HOTEL | www.bossbabetravel.my

